

# SCALE COWL HINGES

Don Coe

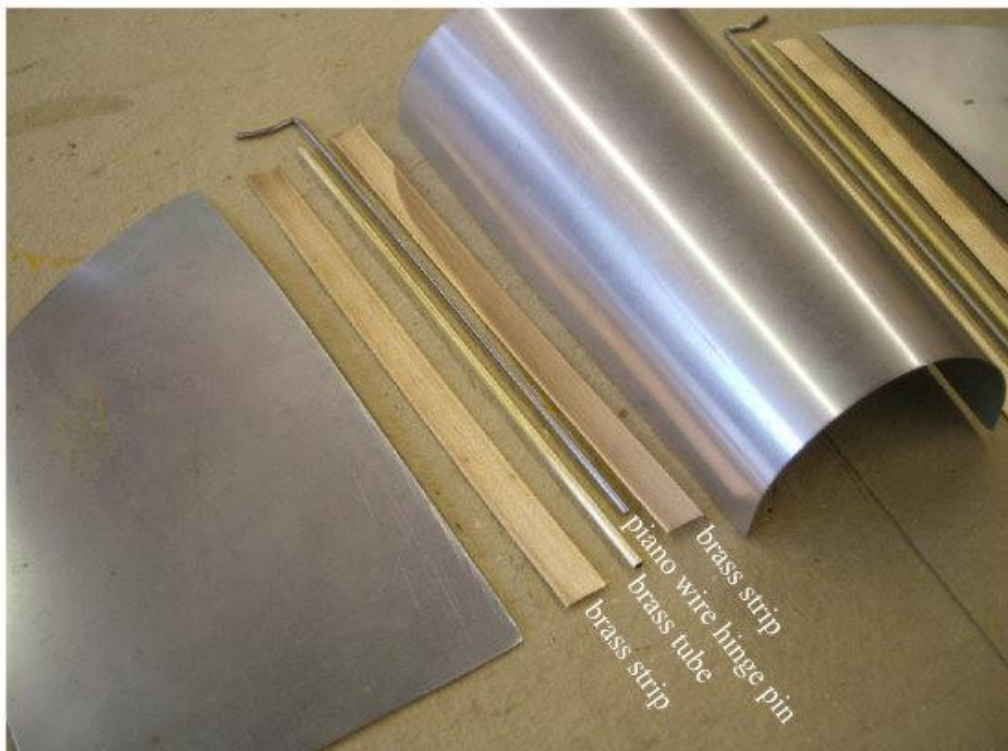
<http://www.modelflight.regheath.com/mf098/wipset.htm>

I have often been asked how I make my hinged cowlings so I thought it about time I wrote an article on the subject.

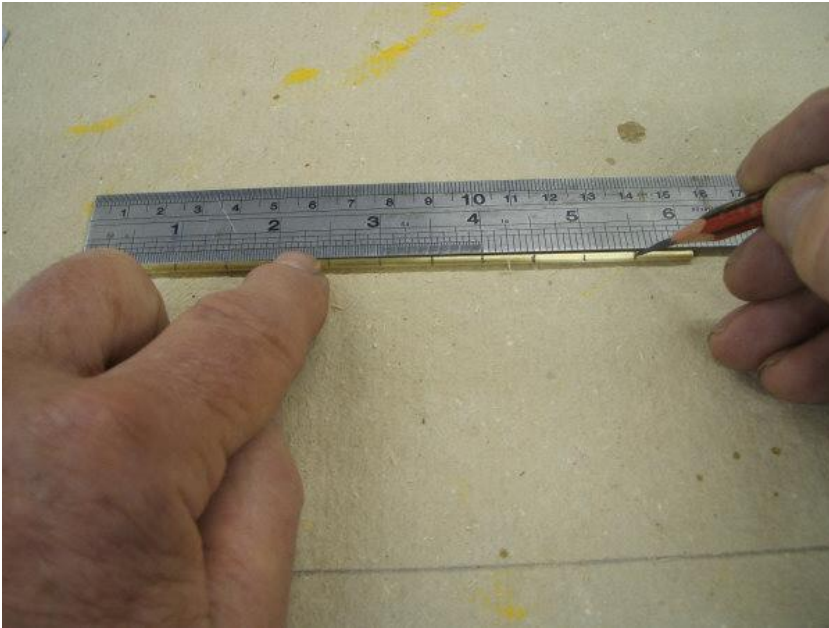
The following photographs with captions should make it all crystal clear. They are of the cowling I am making for my latest project, a DH Puss Moth, but the principal and technique remains the same.



Cut the panels to size and check for accuracy. I use heavy weight Litho Plate.



The component parts. The brass strips could, of course, be replaced with tin. Sand the tube and strip to a bright finish at this stage.



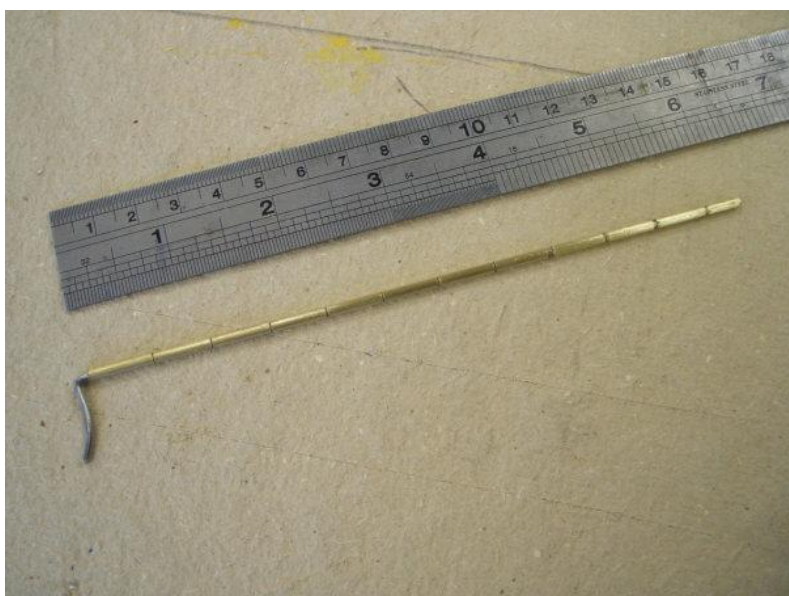
Mark the brass tube into equal lengths.



Cut the tube by rolling under the blade of a Stanley knife.



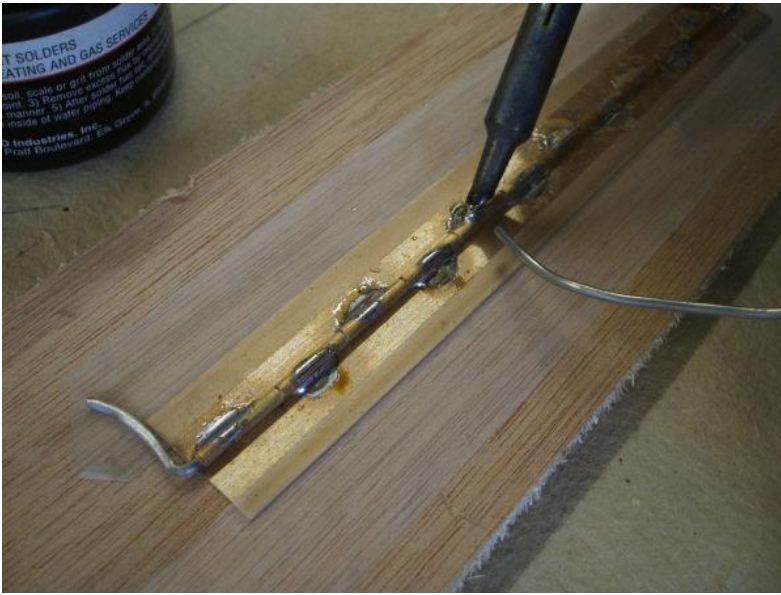
The tube cut ready to thread onto the wire hinge pin. (see next Photo)



Hinge pin with tubes.



Tape the strips down onto a wooden batten leaving a gap about half the tube diameter between them. Lay the tubes/hinge pin item into the gap. Brush a little soldering paste onto alternate sides. AVOID THE TUBE ENDS!



Using cored solder touch each blob of paste with a hot iron.



When cool clean the lot with a paper towel. Put to one side.



Mark a panel with a soft pencil and lightly centre punch. The line of rivets will be on the centre line of the hinge strips.



Drill for the rivets. The rivets I use are 1.5 mm diameter from Nexus Model Supplies. Nexus stock round head, pan head and countersunk and they are available in various lengths. (I use them all. The Puss Moth I'm building had flush rivets so I had to countersink the holes.



With one rivet in place at the end drill the hinge strips using the panel as a template.



A close up shows pan and countersunk rivets for comparison.

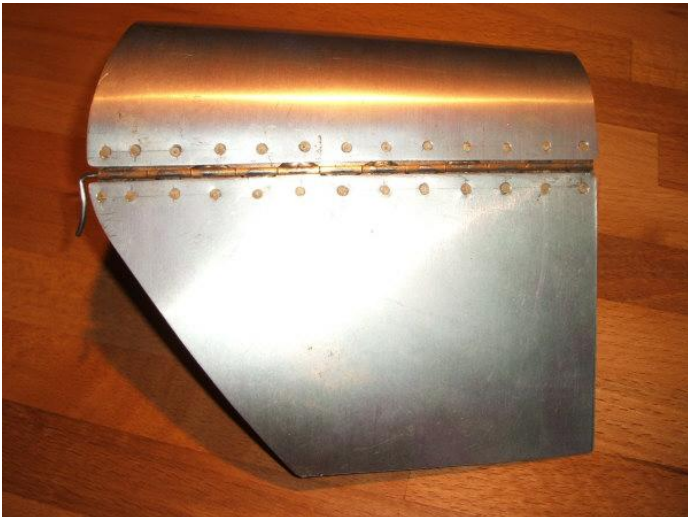


With the rivet head pressed down onto a hard surface snip it short with a pair of side cutters.

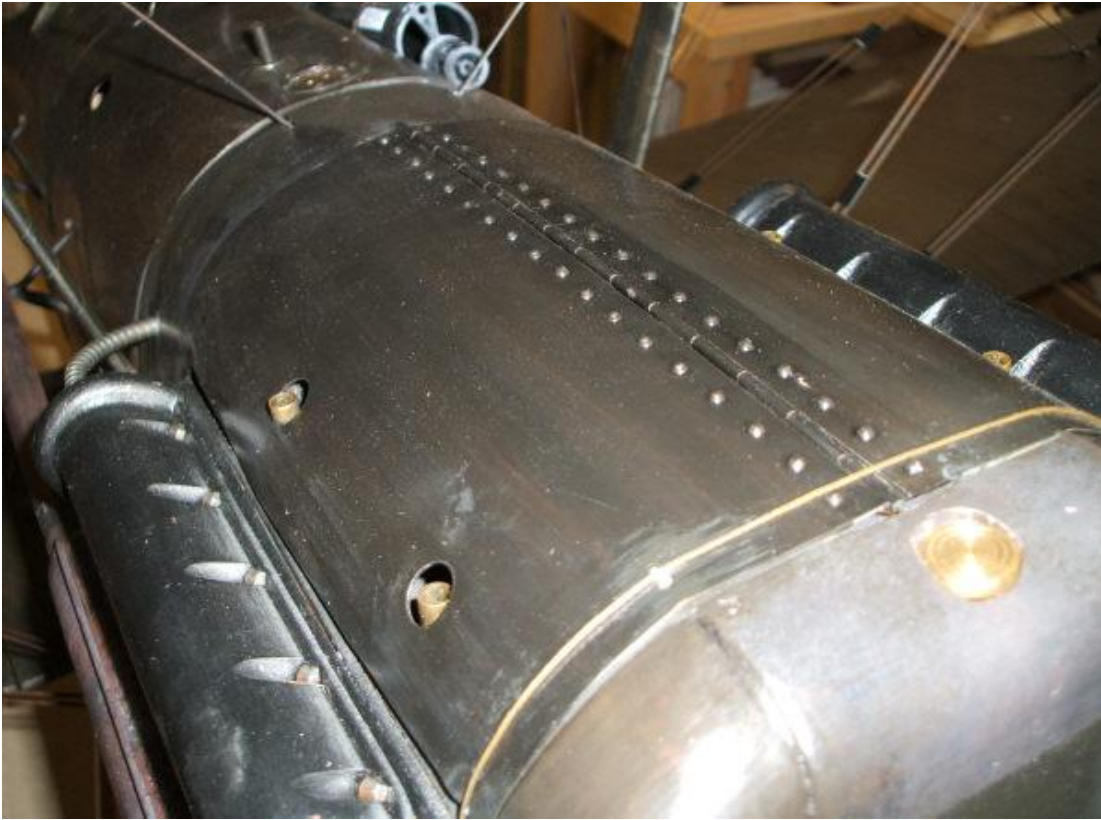


With the rivet head held down firmly against a hard surface tap it four or five times with a light hammer.

THAT'S IT



This shows the completed hinged panel. (DH Puss Moth)



The last two photos are of the cowlings on my SE5A and Tiger Moth just to show the finished thing.

Any questions?

Don Coe